

Guam Early Hearing Detection and Intervention Project (Guam EHDI)



Presentation by Elaine Eclavea, Guam EHDI Coordinator
and Joseph John Mendiola, EHDI Data Coordinator
Pacific Rim 2011 Pre-EHDI Conference Meeting
Saturday, February 19, 2011
Atlanta, Georgia

Part 1: Positive Effects of EHDI

The Families and Children of Guam
Have Benefitted From HRSA and CDC
Funding



Positive Effects of the EHDI Initiative on Guam

- Brought attention to the need to identify newborns with hearing loss and to provide early intervention services to alleviate the impact of the disability
- Brought needed funding to support the establishment of early hearing loss detection and the provision of appropriate and timely intervention.
- Brought together members of the health and education communities, as well as the information technology in a mutual goal to improve services to young children

Positive Effects of the EHDI Initiative on Guam

- Demonstrated the power of parents through collaborative partnerships in the Advisory Committee, which has resulted in new directions, improved services, and continued monitoring to improve services for newborns and young children.
- Provided the opportunity in the creation of the Guam EHDI Family Support Group.
- Provided an opportunity to demonstrate how agencies can be electronically linked for a mutual goal in improvement of services to families
- A spin off from support, Guam now has a electronic birth certificate system and is supporting data management for metabolic screening and Children with Special Health Care Needs

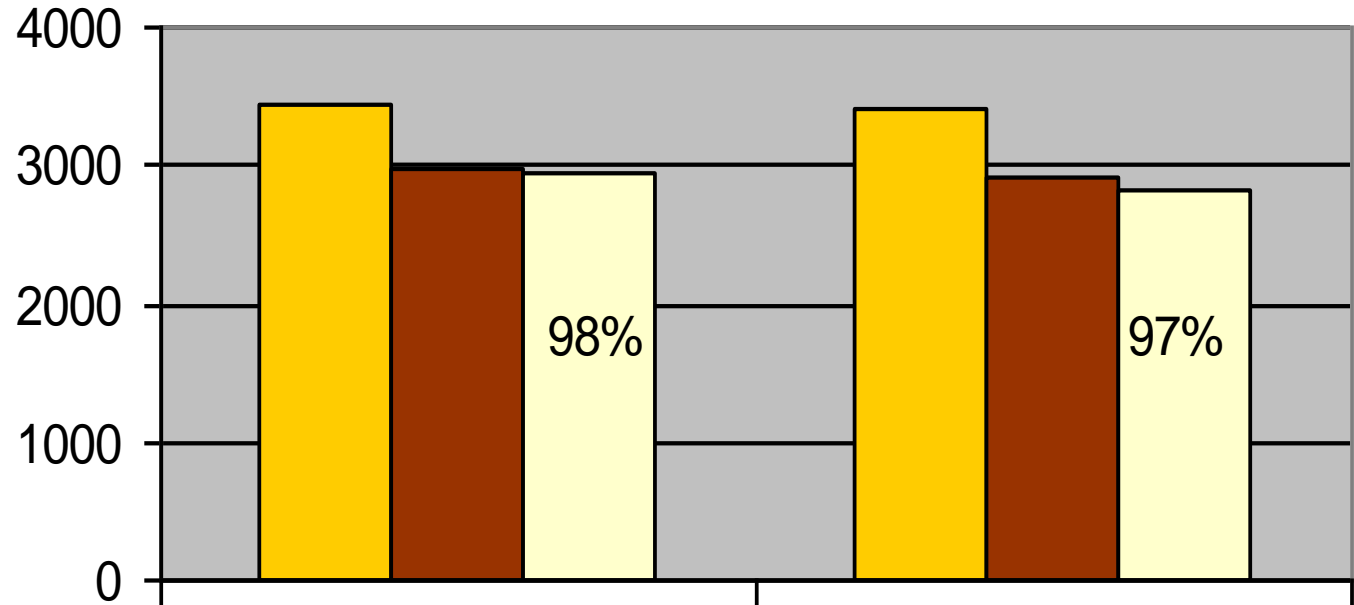


Part 2: Guam EHDI Data

2009-2010 Data

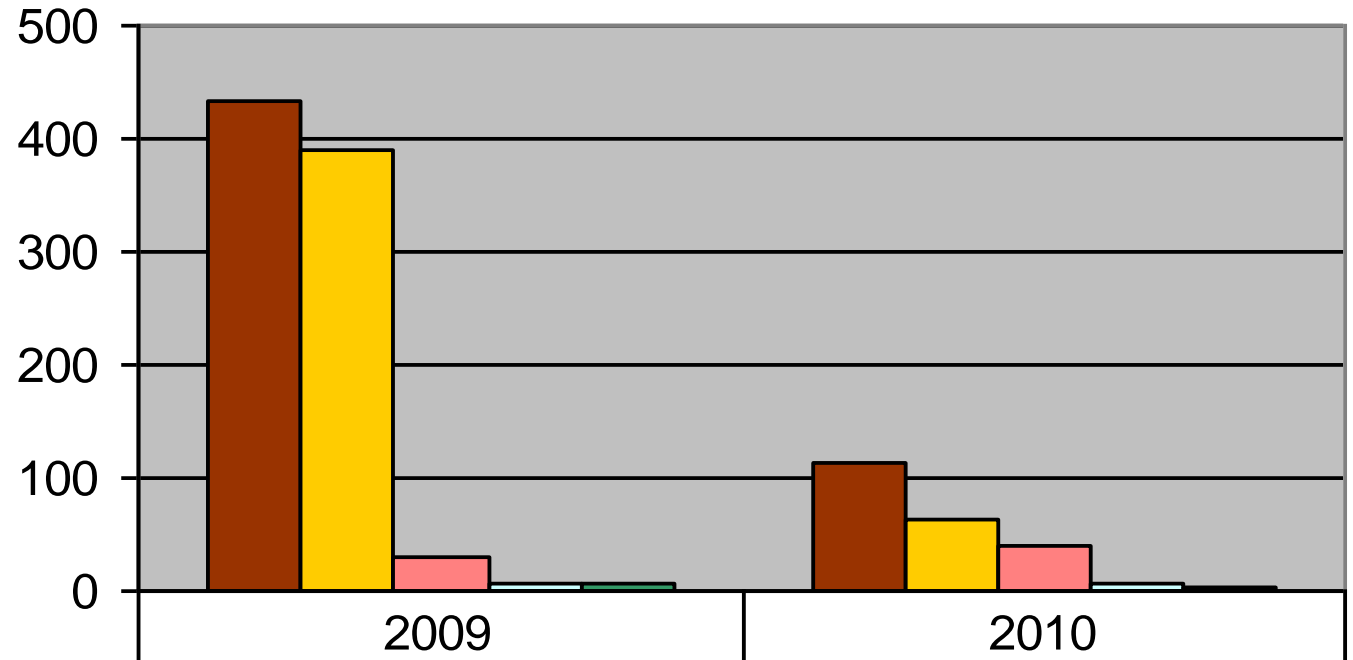


Total Infants Screened on Guam



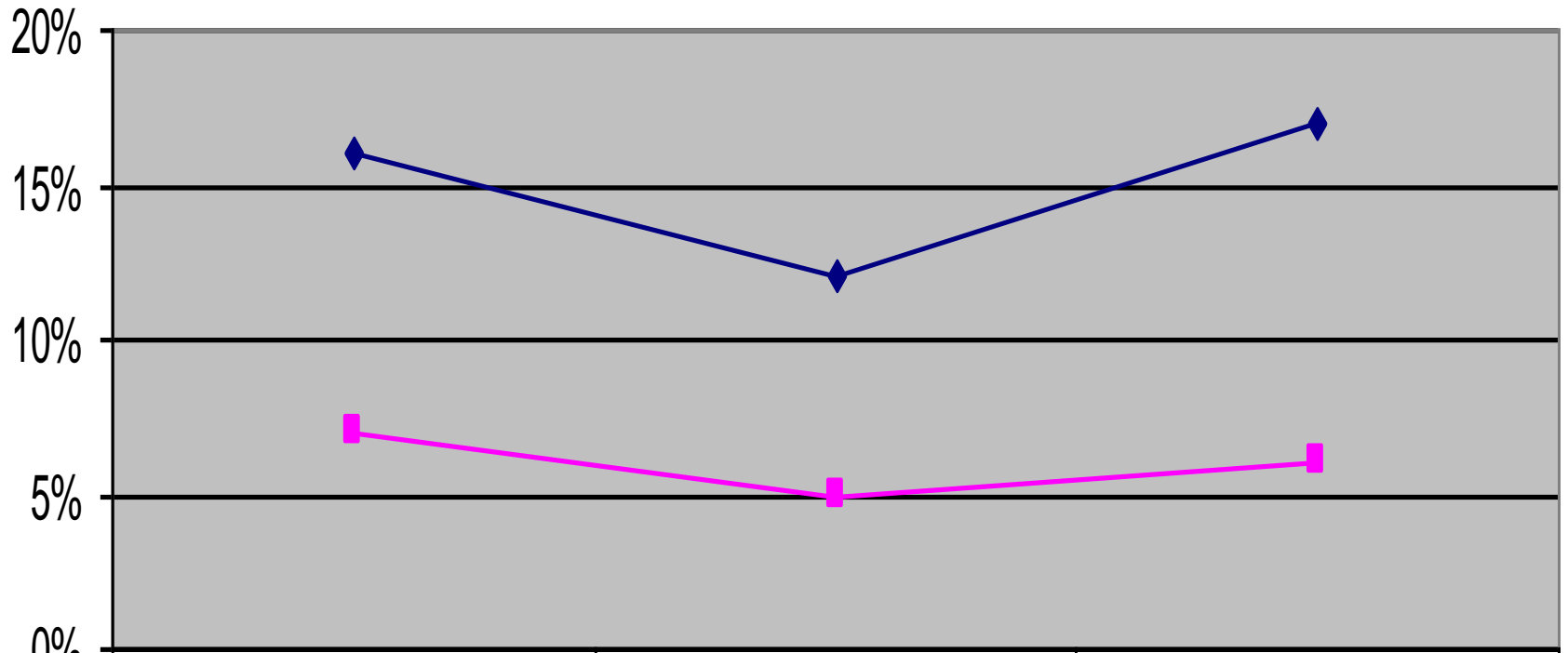
	2009	2010
■ Total Births (Vital Statistics)	3428	3422
■ Total Births (GMH and Sagua Managu)	2991	2901
■ Total Screened	2943	2822

Total Infants Needing a Rescreen



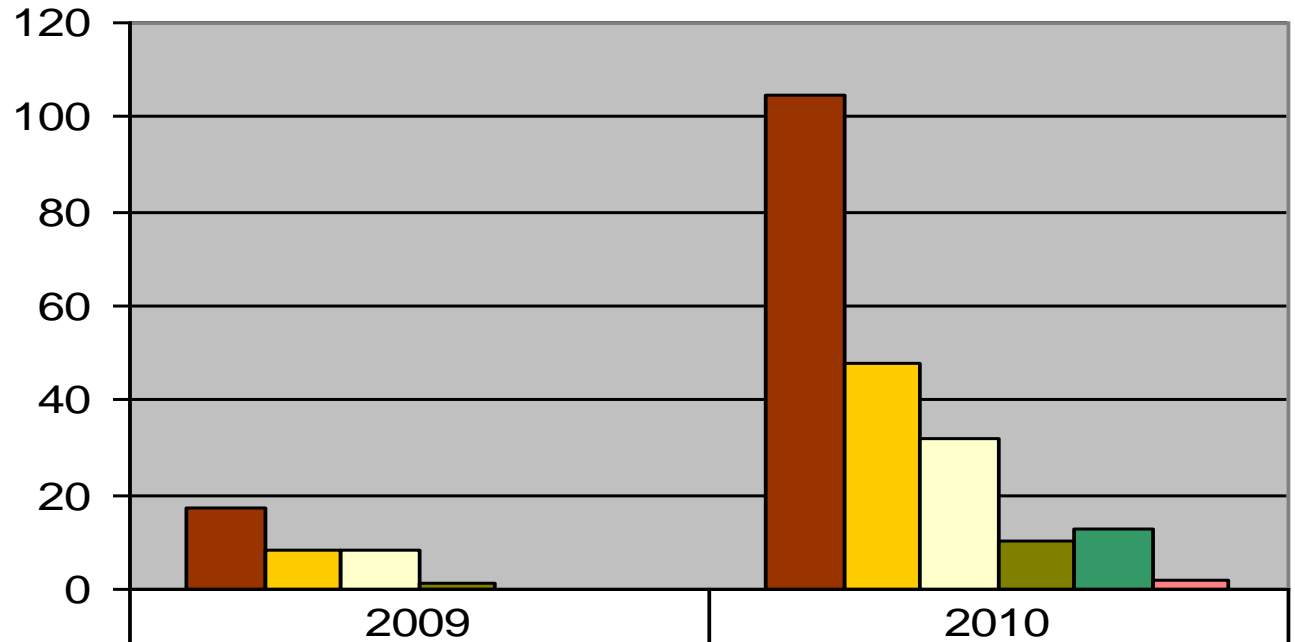
■ Total Infants Needing Rescreen	435	112
■ Total Rescreened	391	63
■ Total LFU	29	41
■ Total Relocating	7	6
■ Total Refused Services	8	2

FIS Comparison (Oct - Dec)



	Oct	Nov	Dec
◆ 2009	16%	12%	17%
■ 2010	7%	5%	6%

Total Infants Referred for DAE

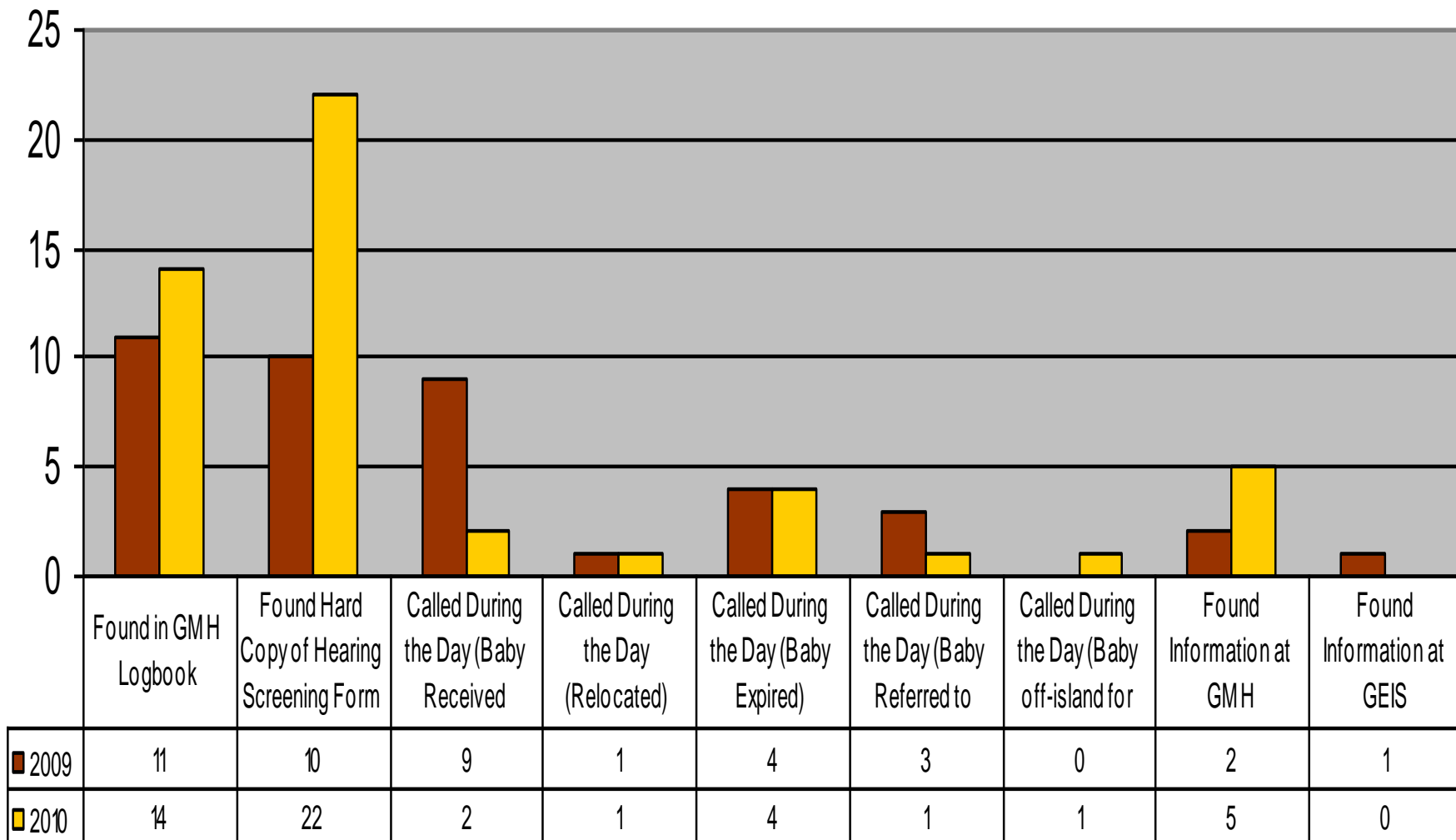


	2009	2010
■ Total Referred for DAE	17	105
■ Total Passed Additional Screening	8	48
■ Total Pending	8	32
■ Total Relocating	1	10
■ Total Refused Services	0	13
■ Infant Died	0	2

Early Intervention Services

- As of 2010, there are 5 infants are receiving early intervention services

LFU Strategies Used



Developed Products

- www.guamehdi.org
- New Brochures
 - Newborn Hearing Screening Program
 - Hearing and Speech Development

It is important to pay attention to infant speech and language development. If there appears to be any delays, get your infant's hearing tested.

Where is additional testing done?
If your baby needs additional testing or you suspect problems with hearing, testing is arranged through the Guam Early Intervention System (GEIS) 300-5776 /5816.

Other Warning Signs of Hearing Loss
Your newborn might be at risk for delayed onset hearing loss if any of the following apply:

- You or another caregiver has concerns.
- Family history of childhood hearing loss.
- Neonatal intensive care stay longer than 5 days.
- Chemotherapy.
- Some infections that occur before and after birth (including CMV, bacterial, and viral meningitis).
- Some disorders that affect the baby's nervous system.



If you have a concern about your infant's hearing and speech development, please contact the:

Guam EHDI Project
Center for Excellence in Developmental Disabilities Education, Research, & Service (Guam CEDDERS)
University of Guam
Office of Academic & Student Affairs
UOG Station
Mangilao, Guam 96923

Phone: 735-2466
TDD/TTY: 734-6531
Fax: 734-5709

Email: nenehearing@guamehdi.org
Website: www.guamehdi.org



This brochure was produced by the Guam Early Hearing Detection and Intervention (Guam EHDI) Project, with 100% funding support from the U.S. Department of Health & Human Services, Health Resources and Services Administration, Grant #H41MC00094, and facilitated by the University of Guam Center for Excellence in Developmental Disabilities Education, Research, & Service (Guam CEDDERS).

Information for this brochure was obtained from The Hearing, Speech, & Student Center (www.hskc.org) and The American Speech-Language-Hearing Association (www.asha.org).

The University of Guam is an Equal Opportunity Employer and Provider.



Newborn Hearing Screening Program



Did you know?
1 to 3 in every 1,000 babies born have a hearing loss.



Early identification and assessment are the first steps in helping a child with a hearing impairment.

If you have a concern about your infant's hearing and speech development, please contact the:

Guam EHDI Project
Center for Excellence in Developmental Disabilities Education, Research, & Service (Guam CEDDERS)
University of Guam
Office of Academic & Student Affairs
UOG Station
Mangilao, Guam 96923

Phone: 735-2466
TDD/TTY: 734-6531
Fax: 734-5709

Email: nenehearing@guamehdi.org
Website: www.guamehdi.org



This brochure was produced by the Guam Early Hearing Detection and Intervention (Guam EHDI) Project, with 100% funding support from the U.S. Department of Health & Human Services, Health Resources and Services Administration, Grant #H41MC00094, and facilitated by the University of Guam Center for Excellence in Developmental Disabilities Education, Research, & Service (Guam CEDDERS).

Information for this brochure was obtained from The Hearing, Speech, & Student Center (www.hskc.org) and The American Speech-Language-Hearing Association (www.asha.org).

The University of Guam is an Equal Opportunity Employer and Provider.



Hearing and Speech Development





Part 3: What Will Be Accomplished Next Year

A Look Ahead



New & Ongoing Directions

- Continue data management and monitoring for all reporting purposes leading to benchmark levels of performance at all levels.
- Expand further in areas of quality assurance for both services and tracking and surveillance
- Continue monitoring loss to follow up rates, working toward benchmark levels of performance

New & Ongoing Directions

- Continue training and upgrade in hearing screener skills, working with all birth sites, including U.S. Naval Hospital, Guam.
- Expanding the EHDI Family Support Group – working with “Hands and Voices”.
- Establish tele-audiology plan and implementation to continue providing DAE services

Parent Story